

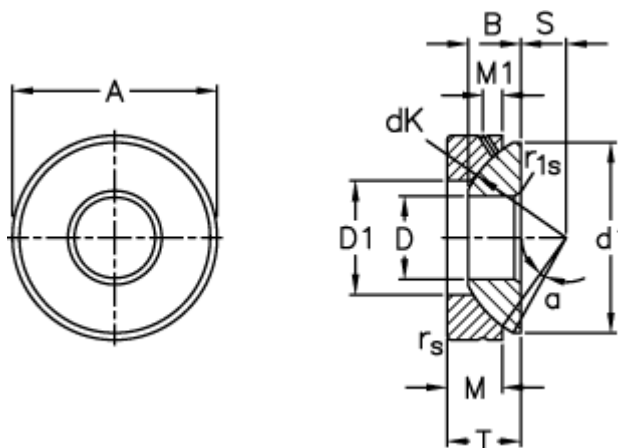
Data Sheet



Article number: 03511010

Description: Fluro Rod end GE 10AX

Measures



A	= 30 0 -0,009	M1	= 3
B	= 7.5	rs, r1s min	= 0.6
D	= 10 0 -0,008	S	= 7
d1 max	= 27.5	Static axial load C0 (kN)	= 120
D1 min	= 15.5	T	= 9,5 +0,25 -0,40
dK	= 32	Tilt angle	= 5
Dynamic axial load C (kN)	= 24	Weight	= 36
M	= 7		